



British Sociological Association

# **BSA POSTGRADUATE FORUM NEWSLETTER**

## **September 2009**



British Sociological Association

---

Welcome to the September edition of the BSA PGF newsletter. It includes the at-a-glance contents list, details of forthcoming events and a call for notification for future events.

Don't forget to check out:

- The **website** – [www.britisoc.co.uk/students](http://www.britisoc.co.uk/students) for regular updates on PG events
- The **forum** - <http://www.britisoc.co.uk/phpbb> for all the latest PGF discussions
- Network for PG relevant news and reviews
- And coming soon, **PG Focus**, the PGF Podcast (see the website)

or **contact us** on [PGForum@britsoc.org.uk](mailto:PGForum@britsoc.org.uk) with any PGF news/updates!

Allison, Mark, Mike & Tung  
PGF Convenors

### ***At-a-glance contents:***

---

#### **PG Profiles and special announcements**

- 1. Forthcoming events at a glance, including calls for papers**
- 2. Full details of Events & Calls for Papers.**
- 3. Funding Opportunities/Job opportunities/Prize awards**
- 4. Publications: Introducing new journals and calls for journal submissions**
- 5. Other News**

### ***PG Profiles***

---

Every month our PG Profiles section will feature profiles of different PG researchers. The idea of PG Profiles is to highlight the work and research interests of the members to the wider community in order to promote and help facilitate cooperation and networking.

This initiative has generated an unprecedented response from the PG community, and we will be working our way through the mountain of profile submissions in the coming months. We are also currently in the process of establishing a format for adding these profiles to the BSA website so that the full archive will be available online. If you have any comments or suggestions regarding this section, please send them to [PGForum@britsoc.org.uk](mailto:PGForum@britsoc.org.uk)



*Lynne Stobbart*

**Institution:** Institute of Health & Society, Newcastle University

**Stage of Research:** PhD: Year 3

**Areas of interest:** Health, research ethics, emergency research, risk communication and decision making, ethnography, research in vulnerable populations

**Any other activities:** NHS Research Ethics Committee Member, Clinical Ethics Advisory Group Member

**Email address:** lynne.stobbart@ncl.ac.uk

---

*Lisa Hinton*

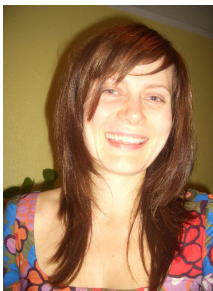
**Institution:** DIPEX Research Group, Department of Primary Care University of Oxford

**Stage of Research:** PhD: Year 2

**Areas of interest:** sociology of health, infertility, patient experience

**Email address:** lisa.hinton@dphpc.ox.ac.uk

---



*Miriam Snellgrove*

**Institution:** University of Edinburgh

**Stage of Research:** PhD Year 1

**Areas of interest:** (Auto)Ethnography and epistemological/methodological issues concerning researcher positionality. Structures, rites and rituals in Camphill. Memory. Silence.

**Any other activities:** endless reading, observing and participating in human interaction.

**Email address:** M.L.Snellgrove@sms.ed.ac.uk

## *The BSA is now on Facebook!*

---



**Are you a fan of the BSA? Then make it official and join us on facebook!**

The BSA has created a facebook fan page with the intention of sharing information and involving sociologists in its development. Check us out at: <http://www.facebook.com/britsoc> and spread the word!

## *New Member Benefit!*

---

### **The Gourmet Society Dining Card:**

**The regular price is £53.50 for a year. BSA members can purchase a card for £27.95, plus get two additional months free.** Gourmet Society Dining Card holders are entitled to 2-for-1 meals or 25% off the entire bill (including drinks) at over 3,000 participating restaurants across the UK.

More info can be found at <http://www.britsoc.co.uk/join/Gourmet.htm>

## *Postgraduate Training Opportunity at British Library*

---

The British Library is offering new postgraduates the opportunity to attend training days in English, History, Social Sciences, Modern Foreign Languages and Art and Design in partnership with academic centres of excellence. These specially tailored days of talks, workshops, discussions and networking opportunities combine a general introduction to the library with special sessions on subject specific material. Researchers will have the opportunity to learn about all aspects of the British Library collections, from oral history recordings to modern literary manuscripts and ephemera through a variety of sessions with curators.

The link is:

<http://www.bl.uk/aboutus/acrossuk/highered/heresearchers/natrestraining/trainingdays/trainingdaydates.html>

1. Forthcoming events at a glance:

Events are listed in chronological order:

	<b>Conference</b>	<b>Location</b>	<b>Date</b>
<b>A</b>	<b>Academy of Social Sciences Public Lecture: Migration and Integration</b>	<b>British Library, London</b>	<b>15 September 2009</b>
<b>B</b>	<b>Work, Family and Education: Postgraduate Interdisciplinary Seminar</b>	<b>Newcastle University</b>	<b>15 September 2009</b>
<b>C</b>	<b>Have We Ever Been 'Post'? Critiques of Sociological Knowledge</b>	<b>University of Warwick</b>	<b>17 – 18 September 2009</b>
<b>D</b>	<b>Beyond Boundaries: Facing interdisciplinary challenges in humanities</b>	<b>Loughborough University</b>	<b>22 September 2009</b>
<b>E</b>	<b>International Darwin Conference</b>	<b>University of Bradford</b>	<b>24-26 September 2009</b>
<b>F</b>	<b>International Conference on the Theory and Practice of Working with Children and Young People</b>	<b>Liverpool John Moores University</b>	<b>21-23 October 2009</b>
<b>G</b>	<b>Rethinking Complicity and Resistance: The Relationship between Visual Arts and Politics - A two-day Postgraduate Conference</b>	<b>University of Aberdeen</b>	<b>23-24 October 2009</b>
<b>H</b>	<b>WHAT ARE SCHOOLS FOR? Visions and scenarios for the future of education and schooling.</b>	<b>University of Lower Silesia, Wroclaw, Poland</b>	<b>22 - 24 October 2009</b>
<b>I</b>	<b>2nd NATIONAL ENVIRONMENTAL CRIME CONFERENCE</b>	<b>British Library, London</b>	<b>28 October 2009</b>
<b>J</b>	<b>Youth Transitions in Troubled Times</b>	<b>SSPSSR, University of Kent</b>	<b>28 October 2009</b>
<b>K</b>	<b>Rethinking Concepts: Families, Intimacies and Personal Relationships - BSA Families and Relationships Study Group Colloquium</b>	<b>BSA Meeting Room, London</b>	<b>6 November 2009</b>
<b>L</b>	<b>Diasporas, Migration and Media: Crossing Boundaries, New Directions</b>	<b>Utrecht University, Netherlands</b>	<b>6-7 November 2009</b>
<b>M</b>	<b>Death, Dying and Bereavement Study Group Annual Symposium</b>	<b>University of Sheffield</b>	<b>16 November 2009</b>
<b>N</b>	<b>Academy of Social Sciences Public Lecture: The Issue of Risk</b>	<b>British Library, London</b>	<b>18 November 2009</b>
<b>O</b>	<b>Changing Roles, Responsibilities and Relationships in Learning and Teaching: The Future of Social Sciences in the University (Organised by: C-SAP)</b>	<b>Jurys Inn, Broad Street, Birmingham</b>	<b>25-27 November 2009</b>
<b>P</b>	<b>British Sociological Association Annual Conference</b>	<b>Glasgow Caledonian University, Glasgow</b>	<b>7-9 April 2010</b>
<b>Q</b>	<b>2nd BSA Food Study Group Conference</b>	<b>British Library Conference Centre, London</b>	<b>5-6 July 2010</b>

## **2. Further Information about events listed in section 1**

---

### **A) Academy of Social Sciences Public Lecture: Migration and Integration, British Library, London, 15<sup>th</sup> September 2009**

The Academy of Social Sciences has arranged a new series of Public Lectures jointly with the British Library and the ESRC and the first two events will be held at the BL on 15<sup>th</sup> September and 18<sup>th</sup> November respectively.

The aim of the series is to present social science to a general public audience under the overarching theme of 'Myths and Realities'. The first evening looks at 'Migration and Integration'.

Tuesday 15 September 2009, 6pm – 7.30pm (followed by a drinks reception)

Tickets £6, £4 concessions

Explore the issues behind the headlines on migration and integration. The speakers are:

- Chair: Professor Avtar Brah, School of Continuing Education, Birkbeck, University of London
- Ms Donna Covey, Chief Executive, Refugee Council
- Professor Michael Keith, Director, ESRC Centre of Migration Policy and Society, University of Oxford
- Professor Ludi Simpson, Professor of Population Studies, University of Manchester

Book your place via the British Library's website: [www.bl.uk/whatson](http://www.bl.uk/whatson) or for more information, contact [social-sciences-events@bl.uk](mailto:social-sciences-events@bl.uk)

### **B) Work, Family and Education: Postgraduate Interdisciplinary Seminar, Newcastle University, 15th September 2009**

Keynote Speaker: Professor Linda McDowell 15th September 2009, Newcastle University

Sponsored by the Feminist and Women's Studies Association (FWSA)

The theme of this one-day interdisciplinary seminar is to explore how social inequalities continue to exist in the worlds of 'work', 'family' and 'education'. The aim of this event is to point to the challenges individuals and families have to face in the changing areas of everyday life. The interconnectedness between work (both paid and unpaid), family and education are of continuing importance as choice (or lack of) in one area can significantly affect opportunities in other areas of life.

The research fields of work, education and family whilst interlinking, provide a massive scope for a wide range of specific research subjects, issues and challenges. By providing a platform for postgraduate researchers to share their experiences and research findings, in which ethical, methodological and theoretical issues are also paramount, this event will provide scope for information and practice sharing in a friendly and informal environment.

We welcome abstracts on the following:

- Work, both paid and unpaid
- Family / Household
- Education
- The interlinks between work, family and/or education
- Relationships with other social divisions
- Theoretical and Methodological Papers

DEADLINE DATE FOR ABSTRACTS: 15th JUNE 2009. Please forward your abstract to [socpgr.events@ncl.ac.uk](mailto:socpgr.events@ncl.ac.uk)

We have funding available to provide help with travelling expenses for non-funded students. Lunch will be provided on the day.

### ***C) Have We Ever Been 'Post'? Critiques of Sociological Knowledge, University of Warwick 17-18 September, 2009***

Registration is now open for the BSA Theory Study Group conference, 2009. Please see poster, programme and registration form (attached) for further details. Please register by 15th August, 2009.

All details are also available at the Theory Group website: <http://www.warwick.ac.uk/go/bsatheorysg>

Keynote Speakers:

Steven Seidman, (SUNY): From 'Capital' to the Politics of Difference: Reconfiguring Social Theory

Liz Stanley, (Edinburgh): Social Theory and the Conceptual Practices of Power: on Dorothy Smith, other Feminist Social Theory and the Boy Problem in Theory and its Canon

Plenary Speakers:

Les Back (Goldsmiths), Robert Fine (Warwick), Steve Fuller (Warwick), John Holmwood (Birmingham), Christina Hughes (Warwick), Stevi Jackson (York), Alana Lentin (Sussex)

Conference Fees:

BSA Member Full: £60

BSA Member Concessionary: £35

Non-Member Full: £85

Non-Member Concessionary £60

The conference fee includes registration and refreshments for both days, as well as lunch on the second day.

The Conference Dinner will be held on the evening of Thursday 17th Sept and will be charged separately at £25.

### ***D) Beyond Boundaries: Facing interdisciplinary challenges in humanities, Loughborough University, 22 September, 2009***

*A conference for postgraduate students in the East Midlands*

The East Midlands Universities Association (EMUA) are pleased to invite Postgraduate Students from the humanities disciplines to a regional conference. Postgraduate student delegates are invited from all ten of the region's universities, offering you an opportunity to meet and build networks with students from Bishop Grosseteste University College Lincoln, De Montfort University, The University of Derby, University of Leicester, University of Lincoln, Loughborough University, The University of Northampton, The University of Nottingham, Nottingham Trent University and The Open University in the East Midlands.

Date: Tuesday 22nd September 2009

Time: 9.30am - 4.00pm

Venue: Stewart Mason Building, Loughborough University.

The conference will develop ideas around the theme of interdisciplinarity between the humanities subjects, aiming to reduce the boundaries between traditional disciplines and helping you face the challenges in multidisciplinary research. We will actively support you to network across the disciplines and across the institutions, ultimately developing a cohort of students who remain in contact following the conference.

Professor Steve Benford, Professor of Collaborative Computing in the Mixed Reality Laboratory at The University of Nottingham, has been confirmed as keynote speaker. He explores novel interaction and communication technologies for rich and dynamic social interaction, focusing on the potential of ubiquitous computing to enhance the creative industries. For more than ten years now this has

involved working with artists, ethnographers and scholars from the arts and humanities to create, tour and study a series of mixed reality performances.

Steve Directs the EPSRC's Doctoral Training Centre in Ubiquitous Computing for the Digital Economy; leads the MRL's Platform grant in the Widespread Adoption of Ubiquitous Computing; Directs the Creator Digital Economy Cluster and is Head of the School of the Computer Science at The University of Nottingham. He received best paper awards at CHI 2005 and CHI 2009; won the 2003 Prix Ars Electronica for Interactive Art; the 2007 Nokia Mindtrek award for innovative applications of ubiquitous computing and has received four BAFTA nominations.

This conference is free to postgraduate students from East Midlands Universities, thanks to the support of the EMUA Postgraduate Group. To register for the conference please visit <http://www.lboro.ac.uk/service/sd/prst/emua.html>.

### ***E) International Darwin Conference, University of Bradford, 24-26 September 2009***

The purpose of this conference is to bring together researchers in the natural sciences, the social sciences and the humanities and to provide a forum for the investigation of different aspects of Darwin's thought.

The occasion for this conference is the 150th anniversary of the publication of the Origin of Species on November 24, 1859 and the bicentenary of his birth (February 12, 1809)

The Organisers are particularly interested in contributions to the following aspects:

- Darwinism in Approaches to the Mind
- Darwinism in the Social Sciences
- Darwinism in the Life Sciences
- Reception of Darwinism

<http://www.brad.ac.uk/darwin2009/>

### ***F) International Conference on the Theory and Practice of Working with Children and Young People, Liverpool John Moores University, 21-23 October 2009***

The conference is organised by the Faculty of Health and Applied Social Sciences, Liverpool John Moores University, Liverpool, UK. The purpose of the conference is to bring together academics and practitioners to debate and analyse the challenges experienced by those who work with Children and Young People nationally and internationally, and to acknowledge, celebrate and critically analyse a range of responses.

The conference is organised as a set of parallel workshops and plenary keynote lectures to enable input from respected speakers to combine with maximum opportunity for interaction with academics and practitioners from across the globe. In addition there will be a scheduled series of poster presentations to enable colleagues to showcase a variety of projects and initiatives. The combination of academic research and practitioner input will make for an energising and stimulating experience. The conference will also include a Welcome Dinner which will be hosted in Giles Gilbert Scott's spectacular Anglican Cathedral, and the Conference Gala Dinner which will be hosted in the magnificent St. George's Hall.

The conference is organised around five themes, which represent key tensions, challenges and social policy responses for those concerned with work with young people and children:

- Evidence Based Practice
- Growing up in the globalised 'risk' society
- Participation
- Higher Education
- Health and Well-Being

***G) Rethinking Complicity and Resistance: The Relationship between Visual Arts and Politics - A two-day Postgraduate Conference University of Aberdeen, 23-24 October 2009***

This conference invites a critical rethinking of the complementary concepts of complicity and resistance: asking complicit with what; resistant to what? It does so in the context of current critical debate in the field of contemporary visual arts, promoting a provocative and challenging exploration of the technical, thematic, and institutional possibilities/limitations/implications of artistic strategies aimed at intervening in the political.

Keynote Speaker: Zeigam Azizov.

Call for Papers

Submission Deadline: 11h September 2009

<http://www.abdn.ac.uk/visualculture/rcr/call.shtml>

***H) WHAT ARE SCHOOLS FOR? Visions and scenarios for the future of education and schooling University of Lower Silesia, Wroclaw, Poland, 22 - 24 October 2009***

Organised by the Educ8 Group: an international research group on social and educational inequalities: [www.educ8group.org](http://www.educ8group.org)

**KEYNOTE SPEAKERS:**

Professor David Halpin, Institute of Education, University of London

Dr. Susanne von Below, Federal Ministry of Education and Research, Germany

Download the call for papers here:

<http://www.york.ac.uk/res/educ8group/educ8wroclaw2009.pdf>

In contemporary society, school faces a crisis of meaning. There are contradictions in the demands made of schooling today: to prepare workers for the knowledge economy, to achieve social justice, instill civic values and to develop the individual whilst offering 'choice' to pupils and parents and demonstrating efficiency in the use of public funds. Schools are subject to increasing scrutiny in terms of examination performance, curriculum and in many other areas.

The aim of this workshop is to step back from the everyday issues and pressures of schooling and education policy to think again about what schools are for and what they should be for. What does a utopian vision for schooling look like? And can it help us to make schooling better?

We welcome papers based on empirical research, educational field experience or political experience in the field of education, which advance conceptual clarification and present utopian visions for or from school, defend schooling as it is or consider how changes might practically be brought about.

**DEADLINE FOR ABSTRACTS: 15 JULY 2009**

### ***I) 2nd NATIONAL ENVIRONMENTAL CRIME CONFERENCE, British Library, London, 28 October, 2009***

The second NATIONAL ENVIRONMENTAL CRIME CONFERENCE will be held on Oct 28th at the British Library, London and is supported by the Environment Agency.

Following last year's successful inaugural event the NECC 2009 once again focuses on environmental crime and eco-security, issues high on the agenda of national and local governments. These emerging threats are a growing global problem which have a direct impact on the environment.

This conference will bring together academics, practitioners, industry, law enforcement and policy-makers to explore a range of current and future eco-crime problems such as wildlife crime, industrial pollution and illegal waste disposal. We will better define the problem, and begin to explore remedial and preventative actions, particularly by bringing together an interdisciplinary effort using crime science, environmental engineering and systems engineering approaches.

Key Sessions include:

- ADOPTING AN INTELLIGENCE-LED APPROACH
- SCIENCE AND TECHNOLOGY RESPONSE
- DEBATE: IS ENVIRONMENTAL CRIME TREATED SERIOUSLY?
- CASE STUDIES OF CROSS-AGENCY COLLABORATION

This event is a must for anyone seeking to understand this emerging new threat, and to make contacts with those who will be at the forefront of this agenda in the coming decade.

EARLY BIRD RATE £75/-Concessionary rate (UCL staff, UCL students, non-UCL students): £50  
(Rate includes full-day conference from 9.15am-4.30pm and includes lunch)

REGISTRATION at:

<http://www.cscs.ucl.ac.uk/events-1/necc/national-environmental-crime-conference/>

### ***J) Youth Transitions in Troubled Times: A BSA Youth Study Group one-day event for postgraduates University of Kent, 28th October 2009***

Keynote speakers:

Sue Heath, Professor of Sociology, University of Southampton  
Valerie Hey, Professor of Education, University of Sussex

The current economic downturn has major implications across the life-course, but it is widely acknowledged across disciplines that the impact of recession upon particular groups of young people is likely to be especially profound.

This event will bring together postgraduate researchers and academics to discuss the impact of the current recession on young people's transitions in education, employment, housing and relationships. It will be an informal environment for postgraduate researchers on youth experiences and transitions to discuss how the current context resituates their research and impacts on the lives of their respondents. The day aims to raise questions about the way in which the current economic downturn might affect the transitions of young people in different ways to recessions past. It hopes to emphasise the extent to which gender, race and class shape the transitions young people are able to make in the current economic climate.

We invite postgraduate and new researchers to submit abstracts of 250 words (max) for papers which address one or more of the following, contextualised by the current economic downturn:

- formal and informal learning
- capitals theory and class, race and gender
- the heterogeneity of youth experience
- education policy
- the role of work/employment
- changing understandings of the markers of adulthood
- processes of dis/identification
- psychosocial affects

Please send your abstracts to Steve Roberts at youthttt@gmail.com by Friday 25th August 2009. Each presentation should aim to last a maximum of 20 minutes to be followed by 10 minutes of questions and discussion.

Postgraduates who do not wish to present are warmly encouraged to attend. Please contact Steve Roberts or Sarah Evans at youthttt@gmail.com for further information.

***K) Rethinking Concepts: Families, Intimacies and Personal Relationships - BSA Families and Relationships Study Group Colloquium, BSA Meeting Room, London, 6 November 2009***

Date: Friday 6th November 11.00-4.00

Venue: BSA Meeting Room, Imperial Wharf, London SW6 2PY

This event aims to encourage critical dialogue on the value of prominent concepts used in the study of contemporary living, notably families, intimacies and personal relationships.

The colloquium will feature keynote presentations from:

- Dr Val Gillies, Families and Social Capital Research Group, London South Bank University
- Prof Lynn Jamieson, Centre for Research on Families and Relationships, University of Edinburgh
- Prof David Morgan, School of Social Relations, Keele University
- Prof Carol Smart, Morgan Centre for the Study of Relationships and Personal Life, University of Manchester

These presentations and pre-circulated position papers will lead into structured group discussion. The event aims to provide a dialogic environment to allow us to advance our thinking.

To facilitate discussion, the colloquium is intentionally small, with the number of participants being limited to 40 people. Places will be allocated through abstracts that demonstrate critical engagement with the key concepts and set of questions.

Abstracts of 200-250 words should be submitted by Friday 11th September 2009 to Sarah Batt, research secretary in CCIG a.s.c.batt@open.ac.uk.

Please put author name and short abstract title in the email subject, for example: Smith J. Happy families? Participants will not make formal presentations but will be expected to read the pre-circulated papers and to critically engage in small group discussion of the framing and concepts used in the study of contemporary living.

Cost: Registration £35 BSA members and £50 non-BSA members (including lunch and refreshments).

***L) "Diasporas, Migration and Media: Crossing Boundaries, New Directions",  
Utrecht University, Netherlands , Nov 06 - Nov 07, 2009***

Studying the relationship between diasporas and the media presents several challenges and issues that are at the core of humanities, social sciences, anthropology, and cultural and media studies.

In the last two decades, an increase in the number of theories and amount of empirical research in the field, with topics ranging from diaspora, mobility, migration, ethnicity, cosmopolitanism, postcolonialism, identity politics, representation, and practices of media production and consumption, have enhanced our understanding of the everyday lives of diasporas and migrants.

Through this process, the area of diaspora, migration and media has evolved to embrace different theoretical and methodological perspectives, resulting in a plethora of work, and as a result, consolidating its position as an important area of investigation.

On the other hand, any emerging canon needs to be criticized and challenged if the field is to retain its dynamism. In addition, the increasingly vocal critiques against multiculturalism give rise to defensive writing: is it time to develop more positive and forceful lines of enquiry.

The aim of this workshop, then is to address the state-of-the-art in the field by inviting colleagues – academics, non-academics, researchers and PhD students - to map the diverse areas of investigation and/or present ongoing empirical and theoretical work that might offer a critique as well as point out new directions in the field.

We invite abstracts (500 words) that address the following themes, but would be happy to consider proposals which fall outside of them:

- The local/global diasporic cultural experiences
- Dynamics of migration and memory
- Dynamics of Representation, discourse and language
- Subjectivity, emotion and identity
- Diaspora, youth and media
- Diasporic Audiences
- Diaspora and Queer theory
- Visual Cultures and Diasporas/Migrants
- Music and Diasporas
- Cultural Citizenship
- Cultural policy and Diaspora
- Web 2.0, social media and diasporas: what are they doing for diasporas and minorities?
- The backlash against multiculturalism and/in the media
- Diasporic/minority media: what is new?
- Urban environments and multicultural encounters
- Diasporic generations, communication and media

The deadline for submissions is extended to 30 June 2009.

Registration fee: £50

Contact: [olga.bailey@ntu.ac.uk](mailto:olga.bailey@ntu.ac.uk), [sophia.smithers@ntu.ac.uk](mailto:sophia.smithers@ntu.ac.uk)

***M) Death, Dying and Bereavement Study Group Annual Symposium,  
University of Sheffield, 16 November 2009***

Social Aspects of Death, Dying and Bereavement (DDB) Study Group  
Theme: Social Class, Death, Dying and Bereavement  
Monday, 16 November 2009, 10.30am–4.30pm  
ICOSS, University of Sheffield, UK

Call for Papers

To mark the new status of the Death, Dying and Bereavement Symposium as part of an independent British Sociological Association Study Group, the theme for this year's meeting reflects sociology's roots in the study of social class. We therefore invite presentations which address death, dying and bereavement in terms of social class, either through ongoing research, already published studies or theoretical discussion. Alongside sociology, the symposium welcomes papers from people in other arts, humanities and social science disciplines. The following questions have prompted us to select the theme of social class: Has the concept of social class become too complex for use, or just plain irrelevant? Has Death Studies led us astray from core sociological questions? With an eye to reforming 'deathways', have we privileged middle class agendas?\*

Please send 250 word abstracts for 20 minute papers to Kate Woodthorpe at [k.woodthorpe@open.ac.uk](mailto:k.woodthorpe@open.ac.uk).

Deadline for abstract submission is Friday, 18 September 2009.

***N) Academy of Social Sciences Public Lecture: The Issue of Risk, British Library, London, 18 November 2009***

The Academy of Social Sciences has arranged a new series of Public Lectures jointly with the British Library and the ESRC and the first two events will be held at the BL on 15th September and 18<sup>th</sup> November respectively.

The aim of the series is to present social science to a general public audience under the overarching theme of 'Myths and Realities'. The second evening looks at 'The Issue of Risk'.

Wednesday 18 November 2009, 6pm – 7.30pm (followed by a drinks reception)  
Tickets £6, £4 concessions.

Explore the issues, misconceptions and facts around risk. The speakers are:

- Chair: Sir Bill Callaghan, Chair of the Legal Services Commission
- Neil Budworth, Corporate Health and Safety Manager for E.On UK and Past President of the Institution of Occupational Safety and Health
- Professor Jenny Kitzinger, Director of Research, School of Journalism, Media and Cultural Studies, Cardiff University
- Professor Bridget Hutter, Professor of Risk Regulation and Director of the ESRC Centre for Analysis of Risk and Regulation, London School of Economics and Political Science

Book your place via the British Library's website: [www.bl.uk/whatson](http://www.bl.uk/whatson) or for more information, contact [social-sciences-events@bl.uk](mailto:social-sciences-events@bl.uk)

## **0) *Changing Roles, Responsibilities and Relationships in Learning and Teaching: The Future of Social Sciences in the University (Organised by: C-SAP), Jurys Inn, Broad Street, Birmingham, 25-27 November 2009***

This conference brings together people engaging in learning, teaching and assessment in the social sciences and those wanting to enhance the staff and student experience within higher education today. The purpose of the conference rests on the recognition that the provision of higher education, and the institutions through which it takes place, as well as the students it serves, are changing rapidly, offering new demands and opportunities for us all. Social scientists are, perhaps, uniquely well placed to research, understand and respond to these changing roles, relationships and responsibilities. At this conference we will examine:

- the roles of students, the University, academics generally, and social scientists in particular in the present era;
- the rights and responsibilities of teachers, students, Higher Education Institutions and the sector as a whole;
- the relationships that create learning communities within the sector and determine the engagements of social scientists with both wider politics and our publics.

Confirmed Keynote Speakers:

- David Gellner, Professor of Social Anthropology University of Oxford
- Professor Kevin Bonnett, Deputy Vice Chancellor of the Student Experience, Manchester Metropolitan University
- Prof Marilyn Strathern, University of Cambridge
- Rosemary Deem, Dean of History and Social Sciences, Royal Holloway, University of London
- Dr Jacqui Briggs, Political Science Association (PSA)
- Pam Tatlow, Chief Executive, Million+
- Aaron Porter, National Union of Students (NUS)

Email: [f.l.worrall@bham.ac.uk](mailto:f.l.worrall@bham.ac.uk)

Web link: [www.c-sap.bham.ac.uk/events/conference\\_09/](http://www.c-sap.bham.ac.uk/events/conference_09/)

## **P) *British Sociological Association Annual Conference, Glasgow Caledonian University, 7-9<sup>th</sup> April 2010***

The British Sociological Association invites submissions to its 2010 Annual Conference. The 2010 Annual Conference follows the successful new format introduced in 2009. Participants can present on topics they wish within broad streams (and open streams) that reflect the core research areas of the membership:

- *Crime and Control*
- *Culture and Consumption*
- *Education*
- *Families, Relationships, Lifecourse*
- *Media*
- *Medicine, Health and Illness*
- *Methodological Innovations*
- *Professional Forum*
- *Religion*
- *Science and Technology Studies*
- *Social Divisions / Social Identities*
- *Space, Mobility and Place*
- *Theory*
- *Work, Economy and Society*
- *Open Stream(s)*

All BSA study groups are strongly encouraged to contribute posters/ papers and other activities addressed to these streams. There will also be opportunities for study groups to meet independently.

The Keynote Plenaries and Sub-plenaries will address the Conference theme:  
Inequalities and Social Justice

Abstract submission form available from:  
BSA Website: [www.britsoc.co.uk/events/Conference](http://www.britsoc.co.uk/events/Conference)

**IMPORTANT DATES:**

Friday 25<sup>th</sup> September 2009: Deadline for abstract submission.  
Friday 15<sup>th</sup> January 2010: Last date for presenters to register.  
E-mail: [BSAConference@britsoc.org.uk](mailto:BSAConference@britsoc.org.uk)

***Q) 2nd BSA Food Study Group Conference, British Library Conference Centre, London, 5-6 July 2010***

Following the success of last year's event, the aim of this 2nd conference is to further explore the interface between food, society and public health through a sociological lens. Understanding patterns of food consumption, food acquirement or food production offers wider insights into social class, ethnicity, self-identity and the life course and the implications for national and global inequalities.

Food systems and eating practices are changing in response to the worldwide economic downturn and ever present environmental concerns, including climate change. This raises many questions, including: How are people responding? Is there a return to a 'make do and mend' mentality in relation to food? Are families passing on food skills and knowledge in a bid to 'pull together' and cope with change? Are food systems and eating practices becoming more sustainable?

What about food production and consumption in less developed countries? We are keen to explore how changing food systems are impacting on food security and livelihoods in developed and less developed countries. Is innovative action being taken to maximise the use of locally grown food, both in terms of improving sustainability and with regard to the taste/enjoyment of food?

This leaves us with the further question of whether current policies and interventions to improve diet and reduce levels of obesity remain pertinent, or do we need new solutions in a changed and changing world?

Academics, practitioners, policy makers and other research users are encouraged to come together to explore these themes over 2 days. The number of delegates will be limited to around 150 in order to focus discussion.

We would welcome single papers (oral or poster) and suggestions for themed sessions (methodological/substantive or in relation to translating research into policy/practice). Submissions from cross-national and multi-disciplinary teams are welcomed. Early expressions of interest with regard to organising round table discussions, workshops, symposia and networking sessions are encouraged.

Postgraduate and early career researchers are supported through special 20 minute oral paper sessions. A prize will also be awarded for the student poster which best communicates its research findings. 40 minute oral sessions will be available for more established researchers.

Postgraduate and early career researchers as well as more established scholars are encouraged to participate.

**IMPORTANT DATES**

Friday, 29 January 2010: Deadline for submission of all abstracts.  
Monday, 8 March 2010: Notification to presenters regarding acceptance.  
Monday, 7 June 2010: Registration deadline for presenters.

### ***3. Funding Opportunities/Job opportunities/Prize awards***

---

#### ***1. PhD Studentship: Problem Gambling***

Applications are invited for a 4 year PhD studentship in the field of problem gambling. The project will focus broadly on processes of recovery from problem gambling, as well as the wider impacts of gambling problems on individuals and their social networks.

The studentship is funded by the Responsibility in Gambling Trust, which provides £15,000 p.a for tuition fees and living expenses.

Problems associated with excess gambling are increasingly coming to be seen as public health and policy concerns. They are associated with debt and poverty and are often found alongside other problems such as alcohol and illicit drug misuse. The aim of this project would be to explore the ways in which gambling impacts on the everyday lives of individuals, and to investigate the processes whereby they attempt to overcome problems with their behaviour.

The project will be supervised by Professor Gerda Reith in the Department of Sociology, Anthropology and Applied Social Science at the University of Glasgow. The Department offers a lively and supportive research environment in which to pursue postgraduate study. For more information about the Department, visit: <http://www.gla.ac.uk/departments/sociology/>

Applicants should have a 1st class degree or 2:1 in a social science subject or related discipline. Previous knowledge of gambling related issues is not essential, but candidates must display a commitment to the investigation of social problems, and the application of theoretical models to address them.

Information on how to apply for PhD study in the University can be found at: <http://www.gla.ac.uk/postgraduate/howtoapplyforaresearchdegree/>

Informal enquiries can be directed to Professor Reith: G.Reith@lbss.gla.ac.uk

Closing date: 7th September 2009

#### ***2. PhD Studentship: London Olympic and Paralympic Games***

The School of Sport, Tourism and the Outdoors at the University of Central Lancashire in Preston is pleased to announce a full-time PhD studentship for up to three years.

Project Reference: RS/08/23

Closing Date: Wednesday 28th October 2009

Provisional Interview Date: Monday 16 November 2009

Project Title: The Greening of the London Olympic and Paralympic Games in 2012

Project Aim: With London staging the Olympic and Paralympic Games in the Summer of 2012 this PhD offers an opportunity for a sociological investigation of International Olympic Committee and Olympic host initiatives to date and those being undertaken by the London organisers in light of the IOC Agenda 21.

Note: Previous applicants need not apply

More details, person specification and application procedures can be found at: [http://www.uclan.ac.uk/information/research/research\\_degrees/studentships.php](http://www.uclan.ac.uk/information/research/research_degrees/studentships.php) and in <http://www.jobs.ac.uk>

It is anticipated that the successful candidate will commence in January 2010.

### 3. *The AL Charitable Trust*

#### APPLICATIONS ARE INVITED For SMALL GRANTS

- *To enable research or the pursuit of a PhD project*
- *Travel, interviewing, making a video*
- *Paying writing up costs*

The Trust is a twenty-eight year old foundation with broad educational aims. A limited number of small grants of up to £1,000 are available this year. The priority of the Trust this year is children in Britain. **According to UNICEF and other agencies, a range of indicators suggests that the well being of children in Britain is considerably lower than that of their peers in comparable countries. We call for applications that address this issue either through focused research on children, families and communities in Britain or in comparative perspective. We encourage research proposals that consider gender as dimensions of these problems.**

There is no application form. Please apply in writing (scripts to be word-processed, 3 copies of all materials supplied) to the Trustees giving your name, address, e-mail, telephone number and a brief CV. Set out the objectives of your work and concisely make the case for the grant to be awarded to you on not more than four sides of A4 in 12 point font. Ask one relevant referee to provide a reference in a sealed envelope and supply the name of a second referee in case the Trustees should seek to pursue it.

Grants will not be given for course fees or conferences and the Trust is limited to supporting the work of doctoral candidates in UK universities. Complete applications should contain three copies of:

- A one-page covering letter briefly explaining why funds are needed and how the proposal relates to the theme of the well-being of children in Britain as above.
- A one-page CV to include your address, telephone contact numbers and an email address.
- An academic reference in a sealed envelope.
- A proposal of not more than 2 doubled sides of A4, which **must** include a detailed budget.

FIRM CLOSING DATE for applications: 25 September 2009

**Send applications to:**

**Carlos Gigoux, AL Trust Administrator,  
Department of Sociology,  
University of Essex,  
Wivenhoe Park,  
Colchester, CO4 3SQ**

NB email applications will not be accepted

### 4. *Jo Campling Memorial Essay Prize 2009*

The editorial board of *Ethics & Social Welfare* is delighted to announce the award of the Jo Campling Memorial Prize for the best student essay (maximum length 3,000 words) on a theme relevant to 'ethics and social welfare'. The author of the prize-winning essay will be awarded £500 and one year's free subscription to the journal. Two further prizes will also be given of £50 each and a free journal subscription.

The deadline for submissions is 30 September 2009.

For further details and terms and conditions visit:

[http://www.tandf.co.uk/journals/pdf/resw\\_jc\\_memorial\\_2009.pdf](http://www.tandf.co.uk/journals/pdf/resw_jc_memorial_2009.pdf)

## 4. Publications: Introducing new journals and calls for Journal submissions

---

### 1. Sociology Call for Tenders: Special Issues 2012

**Tenders are invited for a team of guest editors to produce a special issue of *Sociology* (vol. 46). The issue will be published in October 2012 on a theme of the guest editors' choice.**

*Sociology* is acknowledged as one of the leading journals in its field. For more than three decades it has made a major contribution to the debates that have shaped the discipline and it has an undisputed international reputation for quality and originality.

The team should consist of two or more editors. Applicants should have a clear vision of the purpose and content of their special issue. They should be willing to work closely with the journal chair and editorial board, BSA office, Publications Directors and publisher to produce and promote the special issue. They should be able to show high academic standing and demonstrate that they will have sufficient time to undertake the substantial workload associated with editing a special issue. The BSA welcomes teams including a mix of experienced and early career academics or postgraduates, providing that the team is led by the experienced members and that all members can meet the bid criteria.

**Deadline for tenders: Monday 22 February 2010**

If you would like further information, please email Alison Danforth, BSA Publications Officer, for a full list of criteria and information on how to apply.

Alison Danforth, BSA Publications Officer  
+44 191 383 0839  
[publications@britsoc.org.uk](mailto:publications@britsoc.org.uk)

## 5. Other News

---

- ☛ ***Got a Postgrad event you want to advertise? Let us know about it!***  
Email us at: [PGForum@britsoc.org.uk](mailto:PGForum@britsoc.org.uk) and we will include it in the next edition of the PGF Newsletter: The newsletter is distributed on the 1<sup>st</sup> of every month, therefore submission deadlines are the 25<sup>th</sup> of the preceding month.
- ☛ ***Don't want to wait for the newsletter to find out about PG events?***  
All these events are also advertised on the BSA website at:  
<http://www.britsoc.co.uk/events/ForthcomingEvents.htm>
- ☛ ***For comments, queries and posts about current PG life and post-PhD experiences, visit the PG Forum online at:***  
<http://www.britsoc.co.uk/phpbb/>
- ☛ ***Join the BSA Facebook Fan Page***
- ☛ ***Look out for Postgrad related news and reviews in "Network"***
- ☛ ***Look out for our upcoming announcement about the launch of 'PG Focus' podcasts, which will include interviews with our "Evening with..." hosts, PG students talking about their research and other interesting issues facing PG's today.***